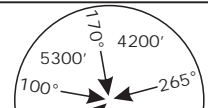


LSZH/ZRH
ZURICH

APP CHART NO.4
Revision 25 AUG 11

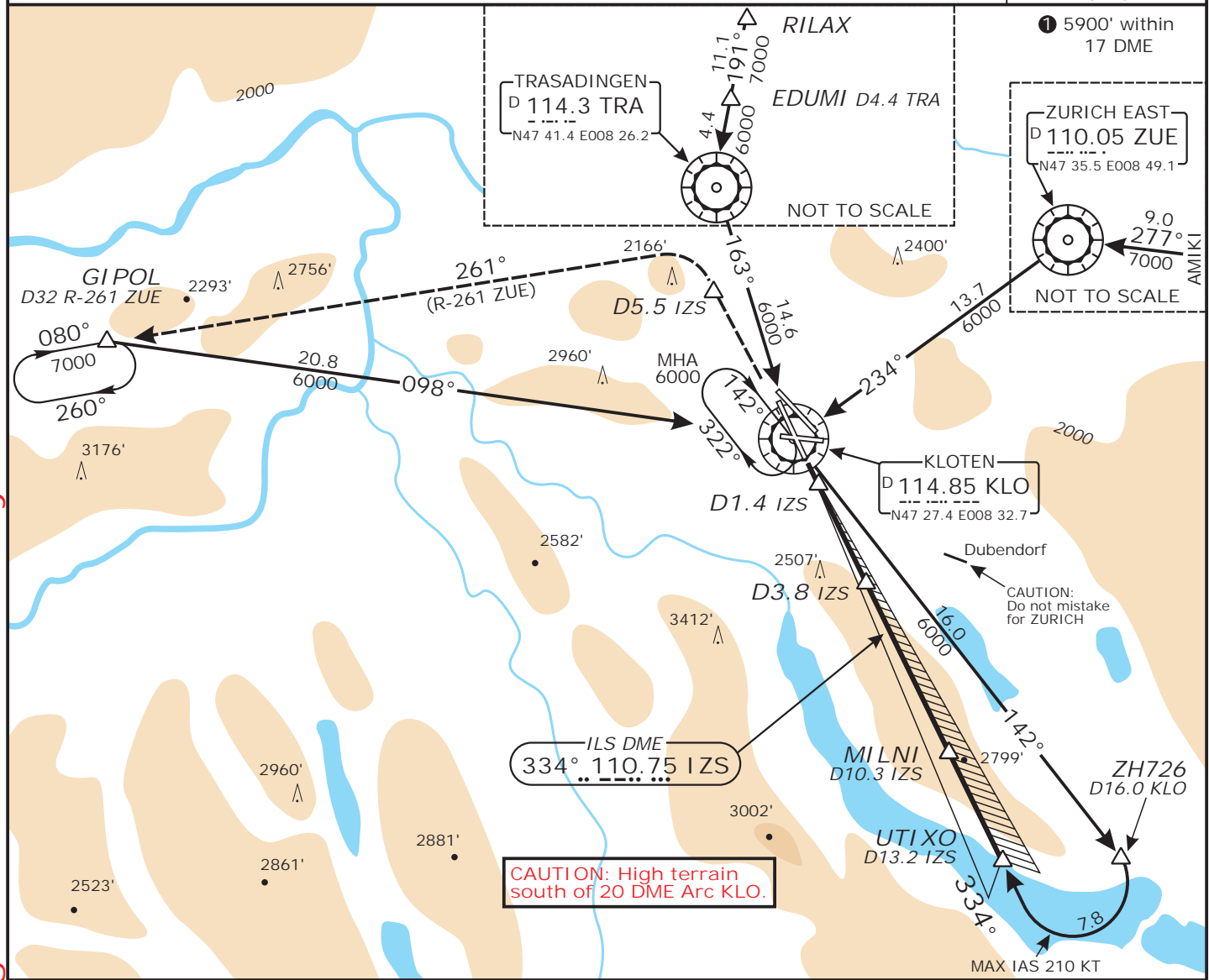
ZURICH, SWITZERLAND
ILS DME Rwy 34

Valid for flight simulation use only - do not use for real life navigation

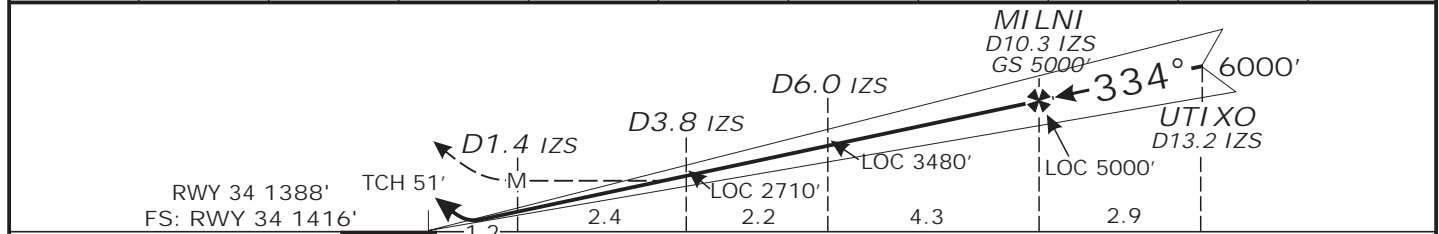
Swiss Radar LSAS_CTR 128.05	ZURICH Arrival LSZH_APP LSZH_W_APP 131.15 118.0	ZURICH Final LSZH_F_APP 125.35	ZURICH Tower LSZH_TWR 118.10	ZURICH Apron LSZH_S_GND 121.75	ZURICH Apron LSZH_N_GND 121.85
LOC IZS 110.75	Final Apch Crs 334°	GS D3.8 2710' (1294')	ILS DA(H) Refer to Minimums	Apt Elev 1416' FS: RWY 1416 RWY 1388'	

MISSED APCH: Climb straight ahead. Initial climb to 5000'. At D5.5 IZS passed the station turn LEFT. Continue climb to 7000'. Intercept R-261 ZUE. Proceed to GIPOL.

Alt Set: hPa Rwy Elev: 51 hPa Trans level: By ATC Trans alt: 7000'



LOC	IZS DME	2.0	3.0	4.0	5.0	7.0	8.0	9.0	11.0	13.0
(GS out)	ALTITUDE	2080'	2430'	2780'	3130'	3880'	4180'	4530'	5230'	5930'



Flight Simulator-OPS		STRAIGHT-IN LANDING RWY 34				Gnd speed-Kts					
MISSED APCH CLIMB gradient mim 3.0% to 2400' DA(H) 1616' (200')		ILS Missed apch climb gradient mim 2.5% DA(H): CAT A: 1820' (204') CAT B: 1630' (214') CAT C: 1643' (204') CAT D: 1653' (237')				70 90 100 120 140 160					
						Descent Gradient 3.30° or LOC Descent Gradient 5.7%					
						MAP at D1.4 IZS					
						LOC (GS out)					
						MDA (H) 2020' (604')					
						VIS: 2500m					

CHANGES: App frequency.